

THOMSON

ST2030™ SIP

VoIP Business Phone



Thomson Telecom

S.A.S with a capital of 130 037 460 €

RCS 390 546 059

Copyright © THOMSON 2005

All rights reserved

09/2005 - 1

www.speedtouchpartner.com

European Community Declaration of Conformity

This equipment complies with the requirements relating to electromagnetic compatibility, EN55022 Class B for ITE and EN55024.

This meets the essential protection requirements of the European Council Directive 89/336/EEC on the approximation of the laws of the Member States relating to electromagnetic compatibility.

Thomson Telecom declares that this ST2030 MGCP IP Phone is in compliance with the essential requirements and other relevant provisions of Directive 1999/5/EC.

You can download the declaration of conformity on www.speedtouchpartner.com.

The CE logo involves the conformity of the product with the essential requirements of implemented directives.



Northern America Federal Communications Commission (FCC) Statement

This equipment generates, uses and can radiate radio frequency energy and, if not installed and used in accordance with the instructions in this manual, may cause interference to radio communications. This equipment has been tested and found to comply with the limits for a Class B digital device pursuant to Subpart J of Part 15 of FCC rules, which are designed to provide reasonable protection against radio interference when operated in a commercial environment. Operation of this equipment in a residential area is likely to cause interference, in which case the user, at his own expense, will be required to take whatever measures are necessary to correct the interface.

Copyright Notice & Trademarks

© Thomson 2005. All rights reserved. Thomson Telecom reserves the right to alter material or technical specification of its products without prior notice.

SpeedTouch and Thomson are registered trademarks. Various elements (including but not limited to trademarks, service marks, designs, logos and copyrighted material) shown on his Admin Guide are protected by intellectual property or other rights.

<u>I. PRODUCT OVERVIEW AND CONNECTIONS.....</u>	4
CONNECTIONS	4
CONNECTING TO THE NETWORK AND THE PC	4
POWERING UP THE PHONE	5
CONNECTED A HEADSET	5
PHYSICAL FEATURES	6
USER PANEL	6
DISPLAY KEYS.....	7
AUDIO KEYS.....	7
DIALING KEYS.....	8
DEFINITIONS OF LED	9
<u>II. CALL SERVICES.....</u>	10
TALKING MODE & OPERATIONS.....	10
5 KINDS OF COMMUNICATION MODE.....	10
OPERATION OF OFF HOOK	10
OPERATION OF ON HOOK.....	10
OPERATION OF MODE SWITCH DURING CALL.....	10
CHARACTER INPUT- EDIT MODE	11
<u>III. CONFIGURATION THROUGH LCD</u>	12
ASSIGN AN IP ADDRESS TO THE PHONE.....	12
SETTING THE ADDRESS	12
CHECK THAT THE IP ADDRESS IS SET PROPERLY	14
RESET TO DEFAULT	14
<u>IV. CONFIGURE PHONE USING WEB INTERFACE.....</u>	15
FIND THE PHONE IP ADDRESS	15
ACCESS TO ADMIN HOMEPAGE (WEB INTERFACE).....	15
SETUP THE SIP CONFIGURATION	16
UPGRADE FIRMWARE	20

I. Product overview and connections

Connections



Connecting to the Network and the PC

The ST2030 MGCP IP Phone has 2 RJ-45 ports that each support 10/100 Mbps full duplex Ethernet connection to external devices- Network port and access port (one for PC and one for LAN).

Network Port (10/100LAN)

Use the Ethernet cable to connect the LAN port to an Internet equipment, such as a hub, switch. Or directly to the Network. In Power over Ethernet (PoE) office environment, the IP phone can be powered from a switch via Ethernet cable, in which case the external power adaptor is not needed.

Access port (10/100PC)

Use the Ethernet cable to connect a network device, such as a computer to the PC port on the back of your phone.

Powering up the Phone

The ST2030 could be powered by either a main power unit, or PoE. Its power consumption is under 6W.

Power Plug

The power plug is fed with 9VDC, 800mA, linear.

Power Over Ethernet

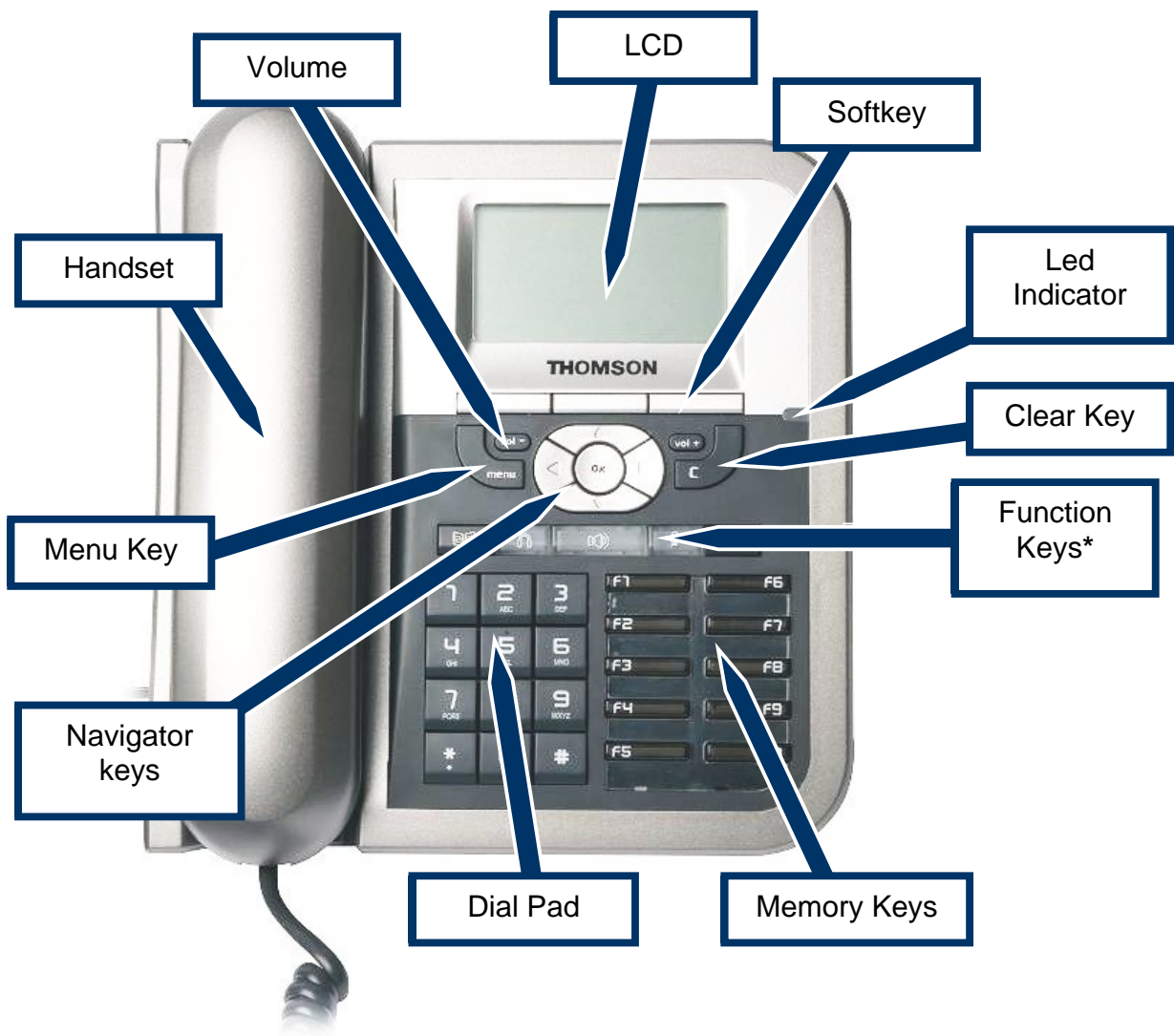
The Speed Touch 2030 supports PoE as defined by 802.3af Standard. It is class 2, and supports class negotiation (in order to plug as many devices as possible on a PoE hub). It can be powered with PoE up to 100 meters with category 5,5e or 6 cables.

Connected a headset

If you will use a headset, plug the RJ9 headset connector into the headset port on the left side of your IP Phone.

Physical Features

User panel








* Keys from left to right: phone book/ headset/ speaker/ mute and redial.





Display keys

	<p>OK key: Confirms settings</p>
	<p>Navigator keys: Enable browsing setting options, display the latest 30 call numbers in standby mode and move among soft keys options in editing mode.</p>
<p>Fout! Objecten kunnen niet worden gemaakt door veldcodes te bewerken.</p>	<p>Clear key: Clear characters in editing mode or exit to standby display (long click) or return back to the previous page.</p>
	<p>Menu key: Enables access to menu</p>
	<p>Phone book key: Enables to access the phonebook and view the names and phone numbers the user wants to dial.</p>
	<p>3 Soft keys: Activate the features described by the text message directly above on the LCD screen.</p>
	<p>LCD Screen: Displays information about the phone settings, such as the number dialing out or calling in, date, time, calls status, call duration timer etc. It is a full graphic display used with 6-line of 20 characters.</p>

Audio keys

 	<p>Volume keys: Adjust the volume of the handset, headset, speaker phone, ringer phone.</p>
	<p>Speaker key: Activates/disables hands free or group-listing function and switch on/off the microphone</p>
	<p>Headset key: Activates headset mode during a call</p>
	<p>Mute key: Activates/deactivates mute function.</p>

Dialing keys

	<p>Dialing pad Press the dial pad buttons to dial a number. Dial pad buttons work exactly like those on your existing telephone. In the editing mode, it can be used to input characters.</p>
	<p>Redial key: Calls the last number dialed.</p>
	<p>Memory keys: Are used as Speed dial keys.</p>
	<p>Handset: Makes and receives calls</p>

Definitions of LED

LED Indicator	Condition	Color	Status
Speaker	Default	Red	OFF
	During FW boot		ON
	Loudspeaker is activated during a call		ON
Headset	Default	Red	OFF
	During FW boot		ON
	Headset or Headset group-listing mode is activated during call		ON
Mute	Default	Red	OFF
	During FW boot		ON
	Mute is active		ON
Feature keys	Default	Green	OFF
	During FW boot		ON
	Used for speed dial keys in standby mode		OFF
	Line appearance: standby mode		OFF
	Line appearance: a call is incoming		Fast blinking
	Line appearance: is active		ON
	Line appearance: hold or remote hold		Slow blinking
System	Boot: during FW boot	Red Green	Red ON
	Boot: during DHCP process (if any)		Red Slow blinking
	Boot: during SIP registration		Red Fast blinking
	Running mode: Ethernet connection is down		Red Slow blinking
	Running mode: IP connection is down (e.g. no IP address allocated)		Red Slow blinking
	Running mode: SIP connection is down (e.g. SIP registration or registration refresh failure)		Red Slow blinking
	Auto-configuration: during configuration file download		Red Fast blinking
	Auto-configuration: during firmware file download		Red Fast blinking
	System is programming FLASH		Red ON
	Ringing state		Green Slow blinking
	Alert messages and missed calls		Green Slow blinking

II. Call Services

Talking Mode & Operations

5 kinds of communication mode

- Handset mode
- Hands free mode
- Headset mode
- Handset group listening
- Headset group listening

Operation of off hook


There are four ways supported for Off Hook operation

- Picking up the handset: Handset mode
- Press **Speaker** key: Hands free mode
- Press **Headset** key: Headset mode
- Press **F1** when phone is ringing

Operation of on hook

- Handset mode: replacing the handset
- Handset -Group-Listening mode: press Speaker key and replace the handset
- Hands free mode: press Speaker key
- Headset/Headset-Group-Listening mode: press Headset key


Operation of mode switch during call

	Handset	Hands free	Headset	Handset -GL	Headset-GL
Handset		1. Press Speaker key 2. Replace handset	Press Headset key	Press Speaker key	N/A
Hands free	Pick up handset		Press Headset key	1. Pick up handset 2. Press Speaker key	N/A
Headset	Pick up Handset	1. Press Speaker key 2. Press headset key		N/A	Press Speaker key
Handset -GL	Press Speaker key	Replace handset	N/A		Press headset key
Headset-GL	N/A	Press headset key	Press Speaker key	Pick up Handset	

Character Input- Edit Mode

The editor is automatically activated whenever you are modifying content of configurable parameters. Apart from entering characters, you can use this editor to navigate through text or delete characters. Even though the maximal text length is not limited by the number of characters on the display because the text can be shifted to the left and right, there are limits for the certain scenarios. E.g. for phone book name, the limit is 15. For number, it is 31. For IP address, it is 15. The following overview shows all characters that can be entered. Number keys must be repeatedly pressed until the required letter appears; the cursor advances after a short delay (one second) or pressing any other key (0..9,*,#, up, down etc.) indicating that the required letter has been accepted.

Key	Lower case	Upper case
1	1 . , = + - & ^	
2	a b c 2 à á â ã ä ç	A B C 2 Ã Ä Å Æ
3	d e f 3 è é ê ë	D E F 3 É
4	g h i 4 ì í î ï	G H I 4
5	j k l 5	J K L 5
6	m n o 6 ñ ò ó ô õ ö ø	M N O 6 Ñ Ø
7	p q r s 7	P Q R S 7
8	t u v 8 ù ú û	T U V 8 Ü
9	w x y z 9 ÿ	W X Y Z 9
0	0 Space @ % () [] < >	
*	* # ? ! : ; ' " _ /	
#	#	

 Note	<p>Using # to Switch uppercase (with indicator ">ABC"), lowercase (with indicator ">abc") and numeric (with indicator ">123") when entering letters.</p> <p>All other symbol needed will be appended to '*' key.</p>
----------------------------------------------------------------------------------------------------	-------------------------------------------------------------------------------------------------------------------------------------------------------------------------------------------------------------------------------

III. Configuration through LCD

Assign an IP address to the phone

Setting the address

Using Fix IP address

1. Press **menu** key.
2. Choose **Admin** with **softkeys**.
3. The phone will prompt **Input Password:**
4. Make sure you have selected the right entry mode with the **A>a>1** **softkey**.
5. Enter the admin password using the **Dialing pad** (default value is 784515) and choose **OK** with **softkeys**.
6. Select **Networking** with **Navigator keys** and choose **Select** with **softkeys**
7. The actual mode must now be highlighted. It can be **DHCP**, **Fixed-IP** or **PPPoE**. Choose **Edit** with **softkeys**
8. Choose **Fixed-IP** using the **Navigator keys** and choose **Save** with **softkeys**
9. Scroll down to the IP address using the **Navigator keys** and Choose **Edit** with **softkeys**
10. Erase the previous IP address with **DelChr** **softkey**
11. Enter the new one with the **Dialing pad** and then press the **Save** **softkey**
12. Press the **Back** **softkey** to return to previous menu.
13. Press the **Back** **softkey** once again to return phone idle mode.
14. Press **menu** key.
15. Choose **Option** with **softkeys**.
16. Use the **Navigator keys** to scroll down the menu to **Reboot**
17. Press **Select** **softkey**

18. The ST2030 displays **Reboot?**
19. Press **OK** softkey
20. Wait for ST2030 to reboot
21. The new IP address is set
22. Check that the IP address is set properly

Using DHCP

1. Press **menu** key.
2. Choose **Admin** with **softkeys**.
3. The phone will prompt **Input Password:**
Make sure you have selected the right entry mode with the **A>a>1** softkey.
4. Enter the admin password using the **Dialing pad** (default value is 784515) and choose **OK** with **softkeys**.
Select **Networking** with **Navigator keys** and choose **Select** with **softkeys**
5. The actual mode must now be highlighted. It can be **DHCP**, **Fixed-IP** or **PPPoE**. Choose **Edit** with **softkeys**
6. Choose **DHCP** using the **Navigator keys** and choose **Save** with **softkeys**
7. Press the **Back** softkey to return to previous menu.
8. Press the **Back** softkey once again to return phone idle mode.
9. Press **menu** key.
10. Choose **Option** with **softkeys**.
11. Use the **Navigator keys** to scroll down the menu to **Reboot**
12. Press **Select** softkey
13. The ST2030 displays **Reboot?**
14. Press **OK** softkey
15. Wait for ST2030 to reboot
16. The new IP address is set
17. Check that the IP address is set properly

Check that the IP address is set properly

1. Press **menu** key
2. Choose **User** with **softkeys**
3. Use the **Navigator keys** to scroll down the menu to **Information**
4. Press **Select** **softkey**
5. **The IP address is displayed**

Once you know the IP address of the ST2030, you can start to configure the phone using its friendly web interface.

Reset to default

In order to reset the phone to its default configuration values (including passwords), perform the following actions:

1. Unplug the phone from its power source
2. Maintain the **Mute** and **Headset** keys pressed
3. Without releasing the **Mute** and **Headset** keys, plug back the phone to its power source
4. ST2030 will prompt "**Reset to default !!!**"
5. The ST2030 is now reset to its default configuration values.

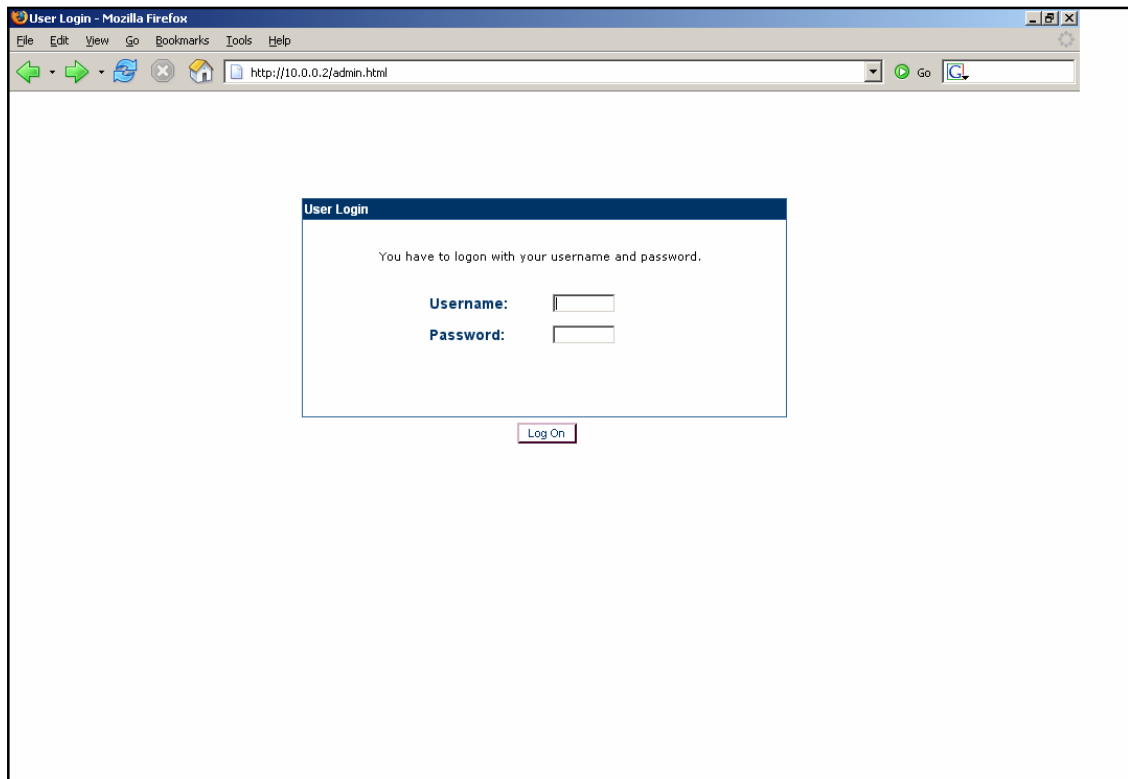
IV. Configure phone using web interface

Find the phone IP address

1. Press **menu** key
2. Choose **User** with **softkeys**
3. Use the **Navigator keys** to scroll down the menu to **Information**
4. Press **Select** **softkey**
5. The IP address is displayed

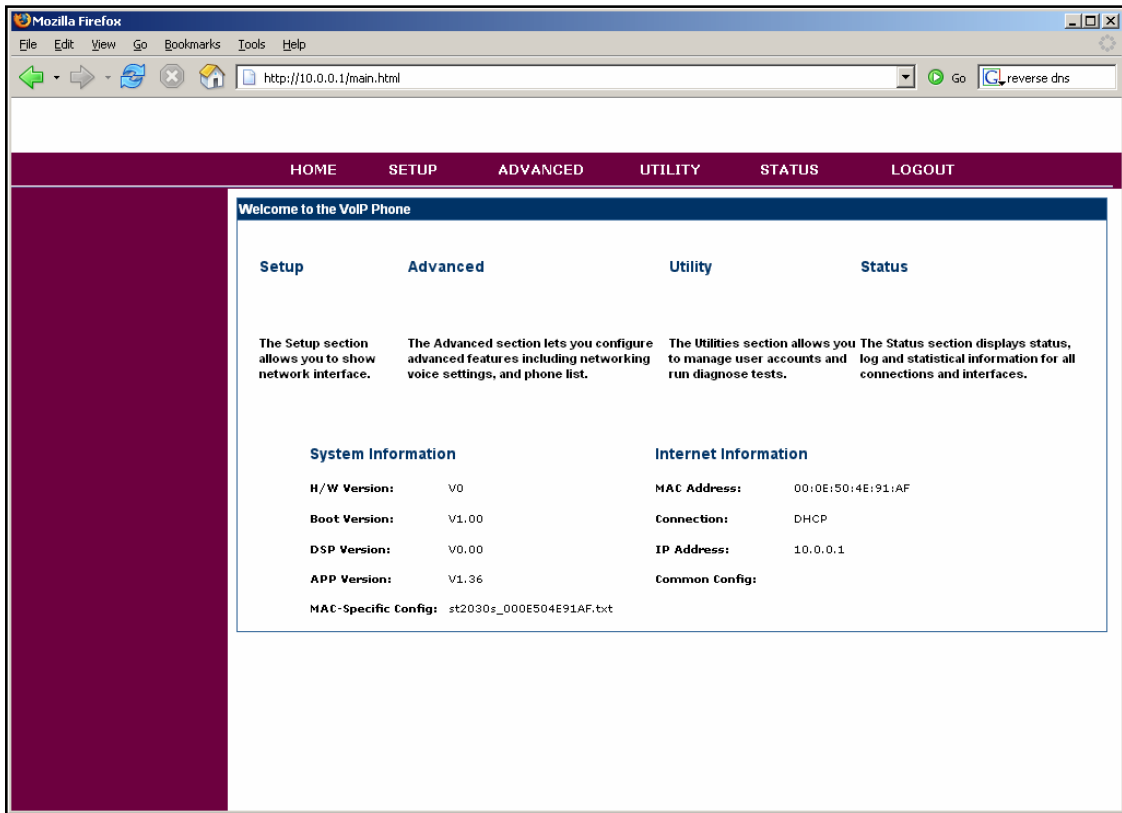
Access to Admin Homepage (web interface)

1. Open a web browser (Firefox, Internet Explorer, Safari...)
2. Enter the ST2030 IP address in the address bar with **/admin.html** appended at the end of it. Ex: **10.0.0.1/admin.html**



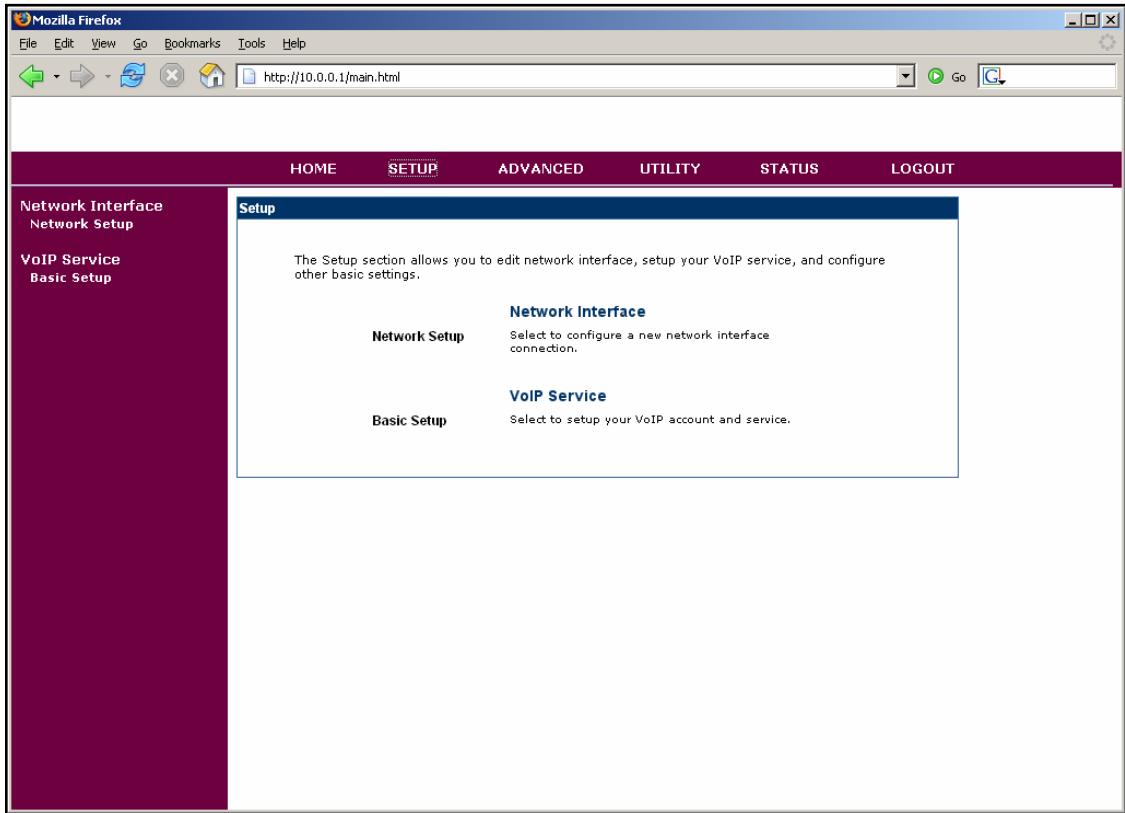
3. Enter the administrator login "**administrator**"

4. Enter the administrator password (default value is **784518**)
5. You will access the Homepage of the ST2030

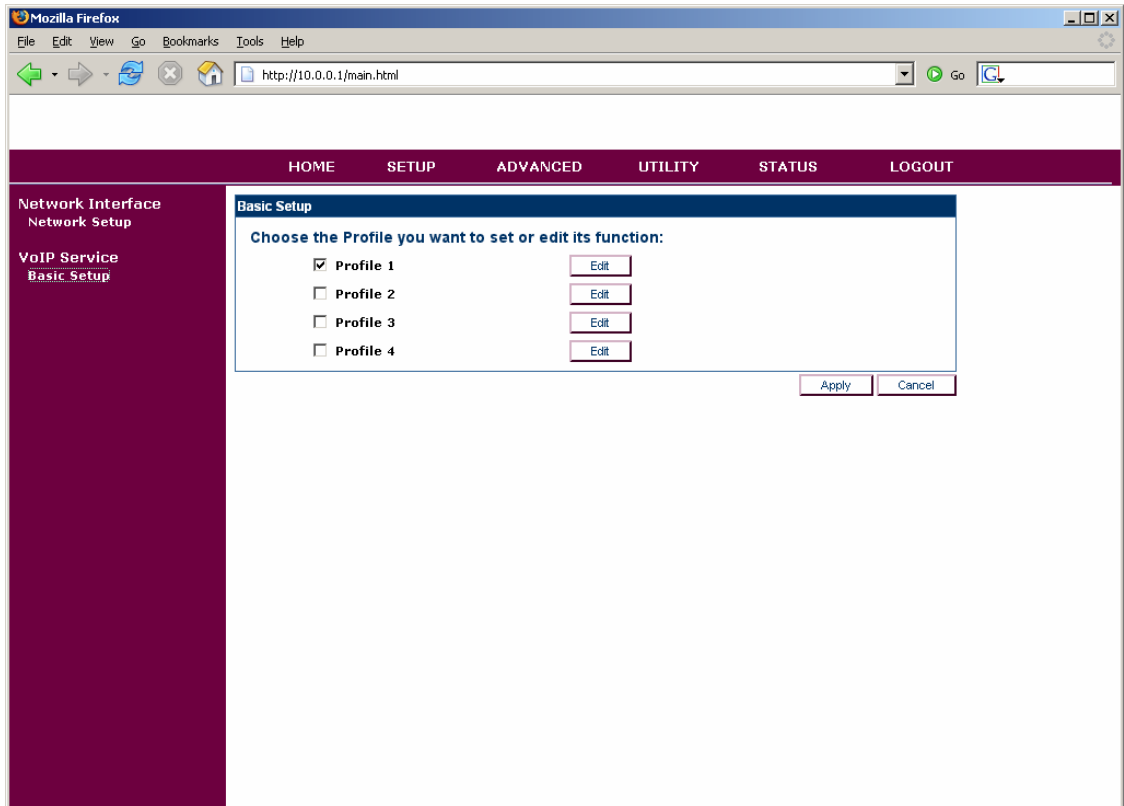


Setup the SIP configuration

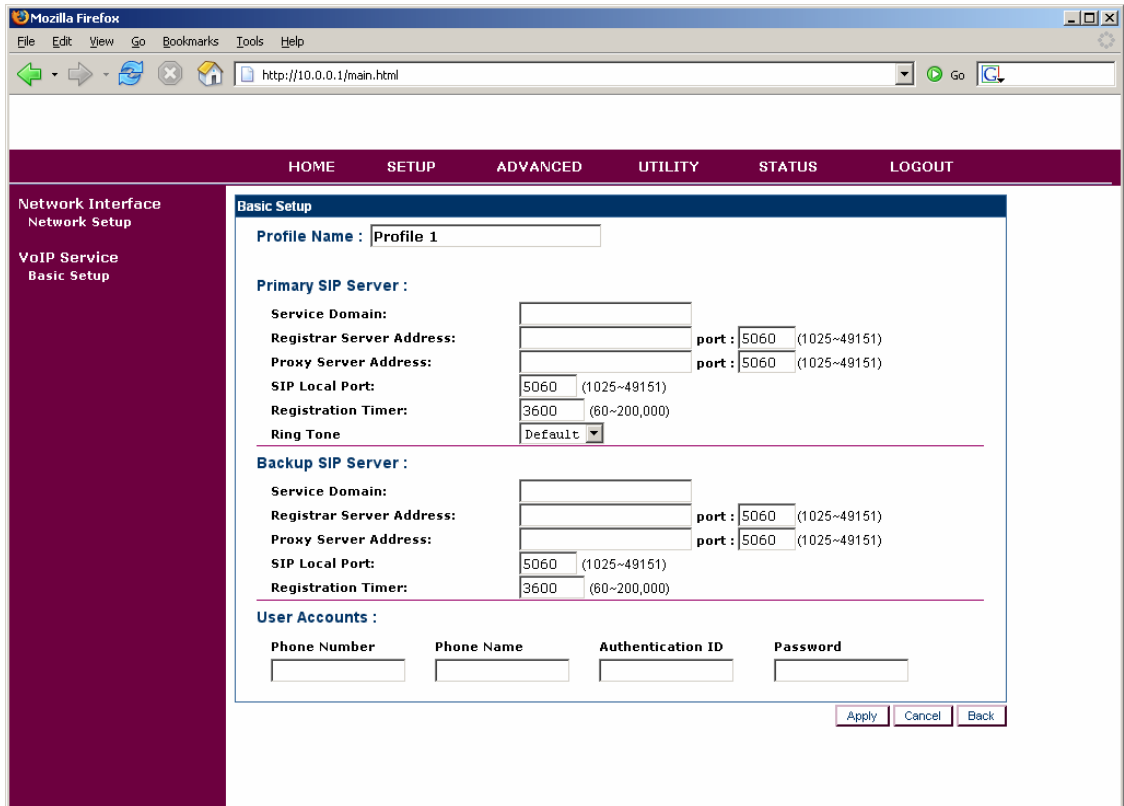
1. Once connected to the ST2030 Admin Homepage, go to the Utility page (Click on **SETUP** on the top menu of the Homepage).
2. You will access the Setup Page



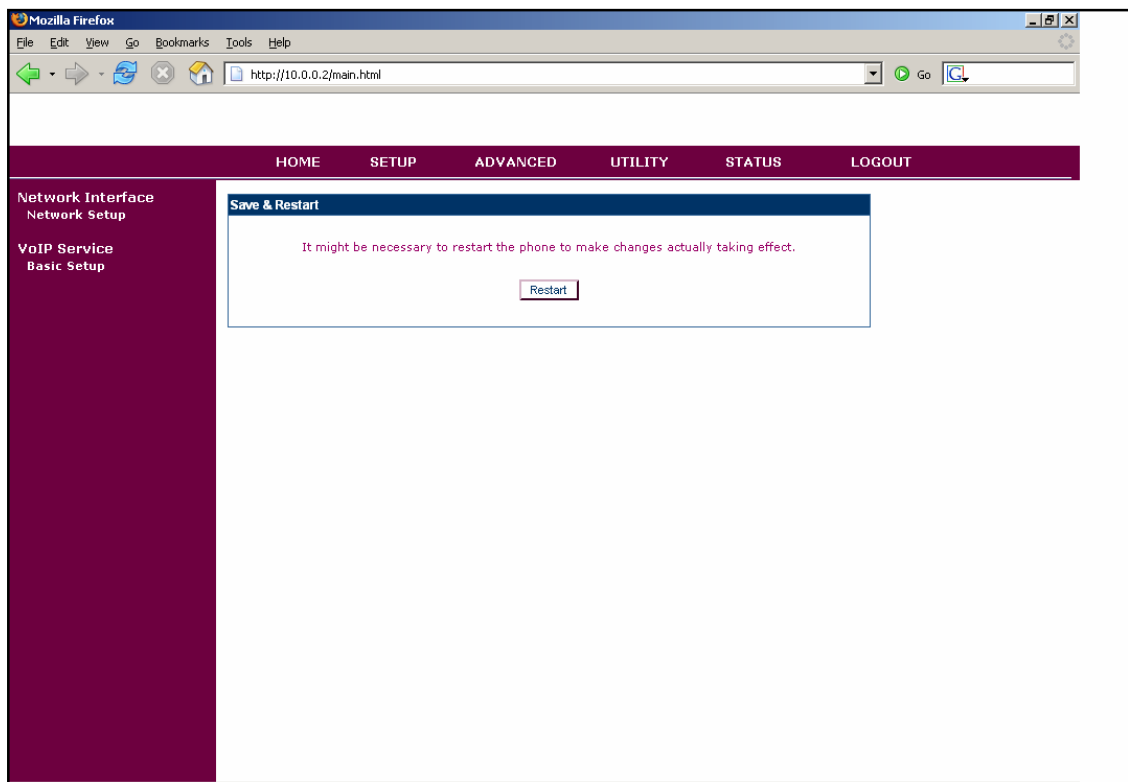
3. Click on **Basic Setup** in the left menu
4. You will access the Setup – Basic Setup page



5. Click on the Edit button of the profile you want to edit.
6. You will access the Profile Setup page.



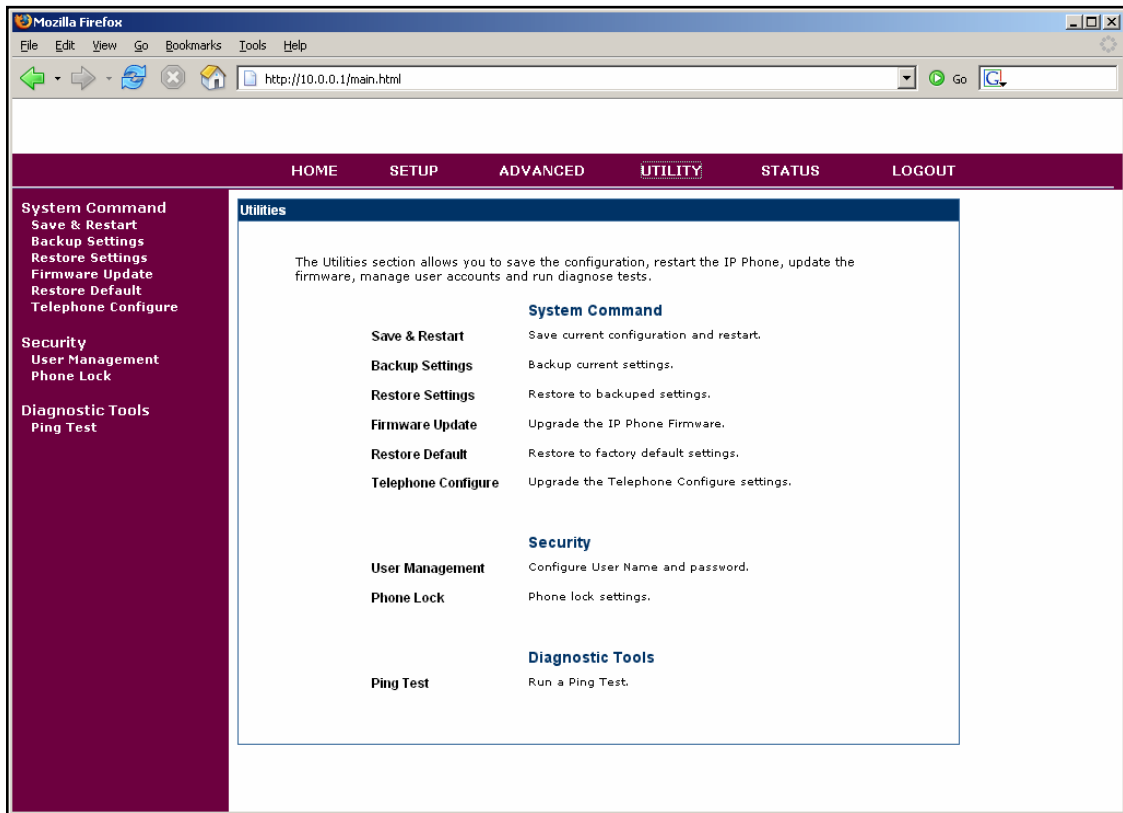
7. Fill in the SIP Servers properties and the User Accounts
8. Click on **Apply**



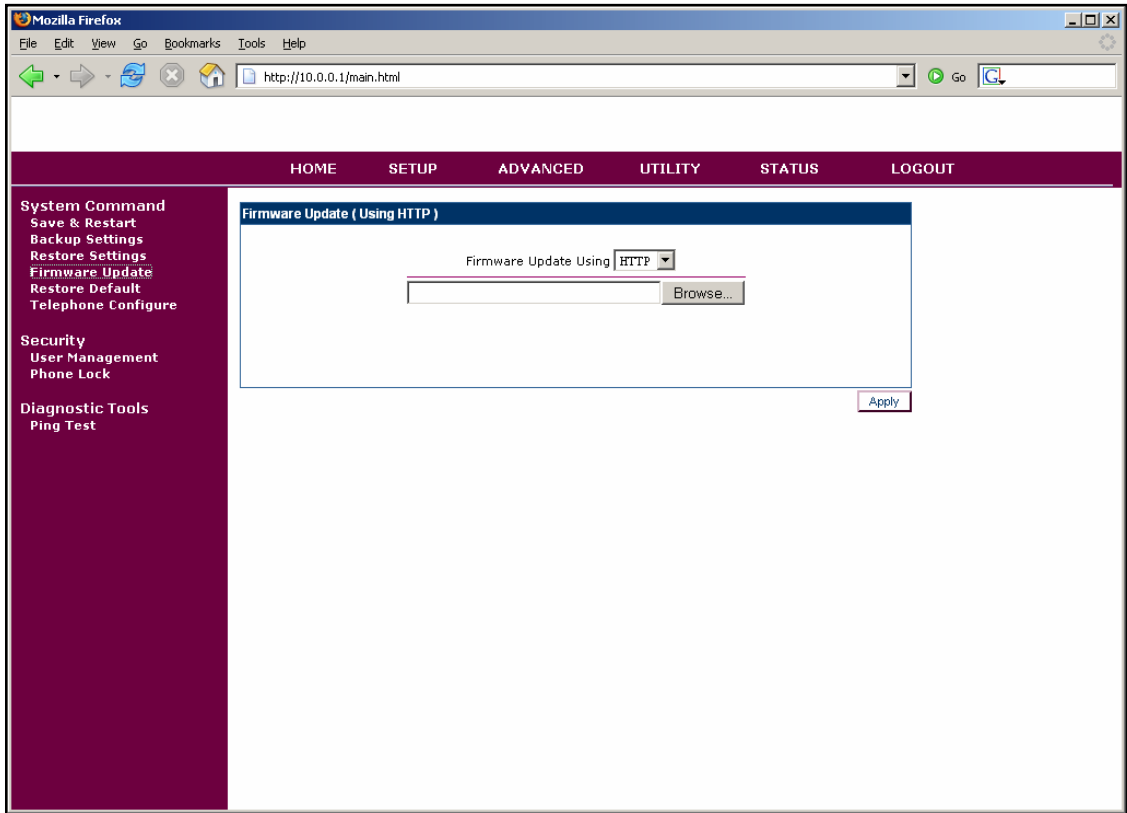
9. Your changes have been taken into account

Upgrade firmware

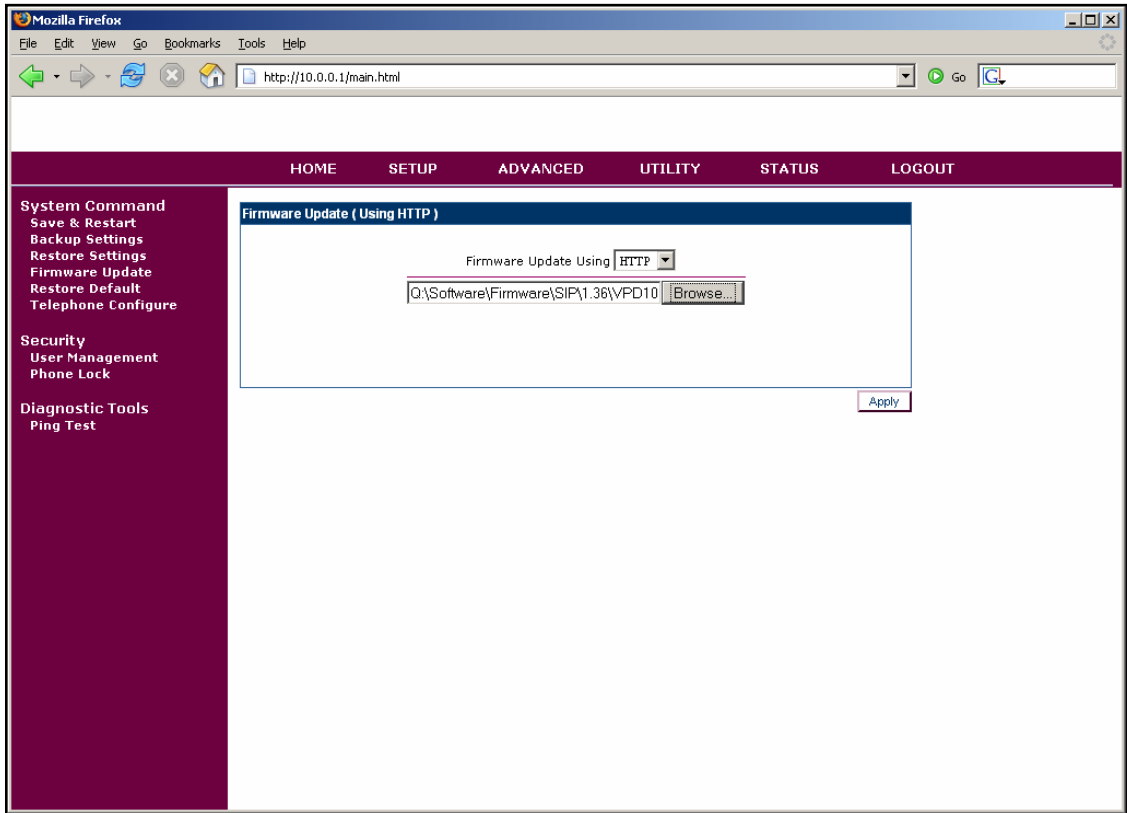
1. Once connected to the ST2030 Admin Homepage, go to the Setup page (Click on **UTILITY** on the top menu of the Homepage).
2. You will access the Utilities Page



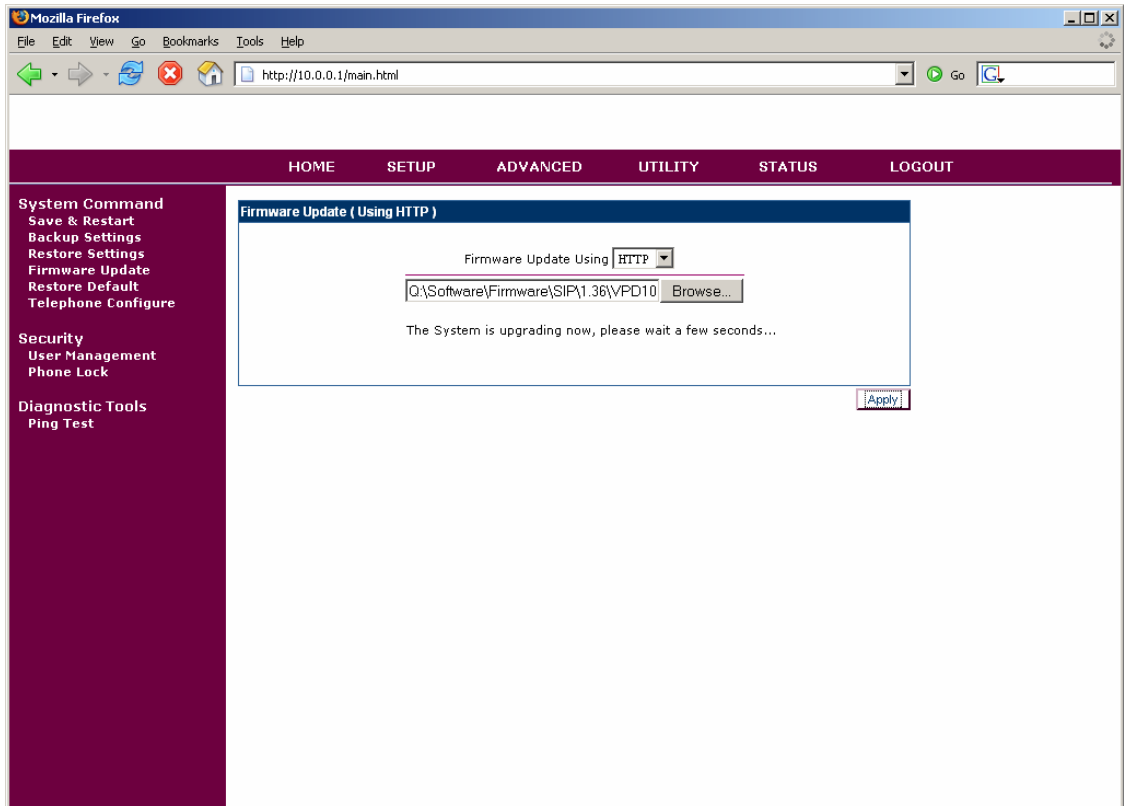
3. Click on **Firmware Update**
4. You will access the Utilities – Firmware Update page



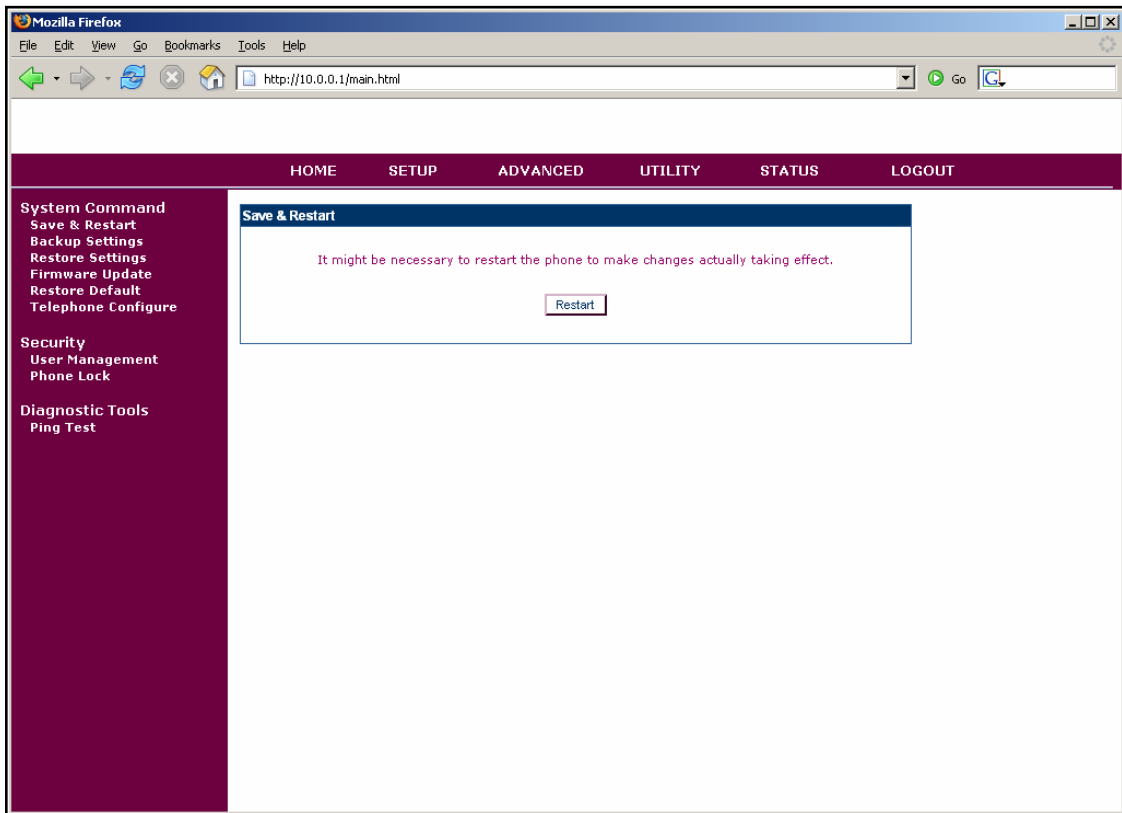
5. Browse to find the firmware file you want to upload



6. The ST2030 will upload the firmware



7. When the firmware file will be uploaded, the ST2030 will ask you to confirm the restart.



8. Click on **Restart**.
9. The ST2030 will reboot and the firmware will be updated